

 **Bimzelx**<sup>®</sup>  
(bimekizumab-bkzx)

# BIMZELX<sup>®</sup>

## IS THE LATEST APPROVED TREATMENT FOR MODERATE-TO-SEVERE HS

Discover a treatment that works differently for adults with **moderate-to-severe hidradenitis suppurativa symptoms\***

SEE ALL THE BENEFITS AND SAFETY  
INFORMATION AT **BIMZELX.com**

\*BIMZELX is the only FDA-approved biologic that targets and blocks two key proteins, IL-17A and IL-17F, to calm the inflammation that may cause HS symptoms.

### USE

BIMZELX is a prescription medicine used to treat adults with moderate-to-severe hidradenitis suppurativa.

### IMPORTANT SAFETY INFORMATION

BIMZELX<sup>®</sup> is a medicine that affects your immune system and may increase your risk of serious side effects, including suicidal thoughts and behavior, serious infections including tuberculosis, liver problems, and inflammatory bowel disease.

Please see full **Important Safety Information** on pages 14-15 and the accompanying full **Prescribing Information**, including **Medication Guide**.



# BIMZELX<sup>®</sup> (bimekizumab-bkzx) WORKS TO REDUCE, RELIEVE, AND HELP CONTROL HS SYMPTOMS



## HALF OF PEOPLE SAW REDUCED HS SYMPTOMS

In two clinical studies, 48% and 52% of people saw at least a 50% reduction in the number of inflamed nodules and abscesses, with no increase in abscesses or draining tunnels at 16 weeks (vs 29% and 32% taking placebo).\*

\*Results are from a 320-mg dose of BIMZELX given as an injection under the skin every 2 weeks. Results may vary. Everyone responds to treatment differently.



## 75% REDUCTION IN HS SYMPTOMS

In two clinical studies, 33% and 36% of people saw at least a 75% reduction in the number of inflamed nodules and abscesses, with no increase in abscesses or draining tunnels at 16 weeks (vs 18% and 16% taking placebo).\*



## MAINTAINED IMPROVEMENT FOR UP TO 1 YEAR

Of those who saw at least a 50% reduction of HS symptoms at week 16, 89% of people maintained it for one year. Because these results were from a less rigorous study, no conclusions can be drawn.†

†Results are from a 320-mg dose of BIMZELX given as an injection under the skin every 2 weeks for 16 weeks followed by every 4 weeks. Results may vary. Everyone responds to treatment differently.



## 50% REDUCTION AT WEEK 2

In two clinical studies, 22% and 20% of people saw at least a 50% reduction in the number of inflamed nodules and abscesses, with no increase in abscesses or draining tunnels at week 2 (vs 14% and 8% taking placebo).\*

### IMPORTANT SAFETY INFORMATION

Suicidal thoughts and behavior have happened in some people treated with BIMZELX. Get medical help right away or call the National Suicide and Crisis Lifeline at 988 if you, your caregiver, or your family member notice in you any symptoms.

BIMZELX affects the immune system. It may increase your risk of infections, including serious infections. Do not use BIMZELX if you have any symptoms of infection without talking to your doctor. If you have any symptoms of infection after starting BIMZELX, call your doctor right away.

Please see full **Important Safety Information** on pages 14-15 and the accompanying full **Prescribing Information**, including **Medication Guide**.

  
Bimzelx<sup>®</sup>  
(bimekizumab-bkzx)

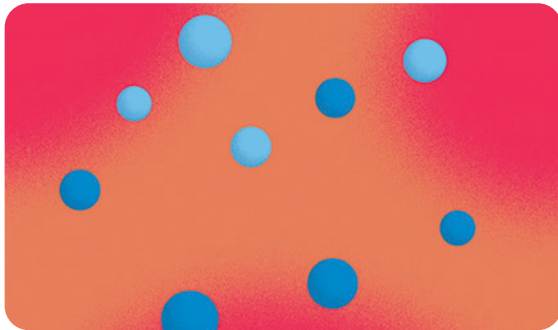
Not an actual BIMZELX patient.

# BIMZELX® WORKS TO TREAT HS IN A DIFFERENT WAY

HS symptoms you see and feel, like abscesses, are thought to be the result of an overactive immune system that produces too many inflammatory proteins inside the body, like IL-17A and IL-17F.

BIMZELX is the only FDA-approved medication that targets two of these key proteins, IL-17A and IL-17F, blocking their ability to contribute to inflammation.

## INFLAMMATION IN THE BODY



## BIMZELX TARGETING AND BLOCKING IL-17A & IL-17F TO CALM INFLAMMATION



IL-17A    IL-17F    Inflammation    BIMZELX

For illustrative purposes only. Based on preclinical data.

## CAN BIMZELX HELP ME?

TALK TO YOUR DERMATOLOGIST ABOUT BIMZELX AND YOUR TREATMENT GOALS.

- 1 COULD I BENEFIT FROM A TREATMENT THAT TARGETS AND BLOCKS IL-17A AND IL-17F?
- 2 HOW SOON COULD I SEE RESULTS, AND HOW LONG COULD THEY LAST?
- 3 WHAT ARE THE POSSIBLE SIDE EFFECTS?



TO LEARN MORE ABOUT TAKING BIMZELX, VISIT [BIMZELX.COM](https://www.bimzelx.com)

## IMPORTANT SAFETY INFORMATION

Your doctor should check you for tuberculosis (TB) before you start BIMZELX and watch you closely for signs of TB during treatment with BIMZELX. If you have TB, or had it in the past, your doctor may treat you for it before you start BIMZELX.

New cases of inflammatory bowel disease or “flare-ups” have happened with BIMZELX. If you have inflammatory bowel disease (ulcerative colitis or Crohn’s disease), tell your healthcare provider if you have worsening disease symptoms during treatment with BIMZELX or develop new symptoms of stomach pain or diarrhea.

Please see full **Important Safety Information** on pages 14-15 and the accompanying full **Prescribing Information**, including **Medication Guide**.

# BIMZELX<sup>®</sup> DOSING

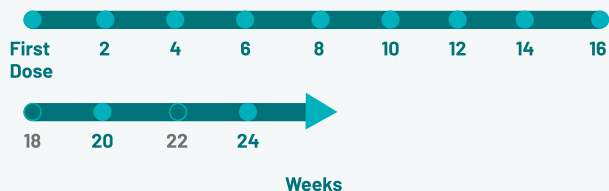
If you and your dermatologist decide BIMZELX is right for you, here's what you need to know about dosing.

## HOW BIMZELX DOSING WORKS FOR PEOPLE WITH HS



**1 DOSE EVERY 2 WEEKS  
FOR 9 DOSES.**

**AFTER DOSE NUMBER 9,  
1 DOSE EVERY 4 WEEKS.**



All doses are 320-mg, given as 2 separate 160-mg injections under the skin every 2 weeks for the first 16 weeks, followed by every 4 weeks thereafter.

## GETTING COMFORTABLE WITH SELF-INJECTION

You or your caregiver (if required) can administer BIMZELX at home using the BIMZELX autoinjector.

Please visit [BIMZELX.com/injection](https://www.bimzelx.com/injection) to watch the BIMZELX autoinjector video and familiarize yourself with proper injection procedure.

Some patients may use prefilled syringes to administer BIMZELX.



Not actual injector label. For illustrative purposes only.

## BIMZELX AUTOINJECTOR



Even if your symptoms improve and you begin to feel better, do not skip a dose. Always take BIMZELX as prescribed and do not discontinue treatment without speaking to your doctor.



## INJECTION QUESTIONS? THE BIMZELX NAVIGATE<sup>®</sup> TEAM CAN HELP.

Learn more about patient support and more on **page 12**.

## IMPORTANT SAFETY INFORMATION

Elevated liver enzyme levels have happened with BIMZELX. Your doctor will do blood tests to check your liver enzyme levels before starting treatment and during treatment and may tell you to stop taking BIMZELX if you develop liver problems. Call your doctor right away if you develop any signs or symptoms of liver problems like pain on the right side of your stomach, feeling very tired, loss of appetite, nausea or vomiting, itching, dark urine, light-colored stool, or yellowing of your skin or the whites of your eyes.

Please see full **Important Safety Information** on pages 14-15 and the accompanying full **Prescribing Information**, including **Medication Guide**.

# SAFETY & SIDE EFFECTS

## Important things to know before starting your treatment.



### TELL YOUR HEALTHCARE PROVIDER ABOUT ALL YOUR MEDICAL CONDITIONS, INCLUDING IF YOU:

- Have a history of depression, or suicidal thoughts or behavior
- Have liver problems
- Have inflammatory bowel disease (Crohn's disease or ulcerative colitis)
- Have recently received or are scheduled to receive an immunization (vaccine). You should avoid receiving live vaccines during treatment with BIMZELX®.
- Are pregnant or plan to become pregnant. It is not known if BIMZELX can harm your unborn baby.
  - If you become pregnant while taking BIMZELX, you are encouraged to enroll in the Pregnancy Registry, which is used to collect information about the health of you and your baby. Talk to your healthcare provider or call 1-877-311-8972 to enroll in this registry or visit <http://mothertobaby.org/pregnancy-studies/>.
- Are breastfeeding or plan to breastfeed. It is not known if BIMZELX passes into your breast milk. Talk to your healthcare provider about the best way to feed your baby during treatment with BIMZELX.



## THE MOST COMMON SIDE EFFECTS

### The most common side effects of BIMZELX include:

- Upper respiratory tract infections
- Headache
- Herpes simplex infections (cold sores in or around the mouth)
- Small red bumps on your skin
- Feeling tired
- Fungal infections (oral thrush or infections in the mouth, throat, skin, nails, feet, or genitals)
- Pain, redness, or swelling at the injection site
- Stomach flu (gastroenteritis)
- Acne

These are not all of the possible side effects of BIMZELX. Call your doctor for medical advice about side effects.



### TALK TO YOUR HEALTHCARE PROVIDER IF YOU HAVE QUESTIONS ABOUT THE SAFETY AND SIDE EFFECTS OF BIMZELX.

## IMPORTANT SAFETY INFORMATION

Tell your doctor if you have recently received or are scheduled to receive a vaccine. You should avoid receiving live vaccines during treatment with BIMZELX.

The most common side effects of BIMZELX in plaque psoriasis and hidradenitis suppurativa include upper respiratory infections, fungal infections (oral thrush or infections in the mouth, throat, skin, nails, feet, or genitals), headache, pain, redness or swelling at injection site, herpes simplex infections (cold sores in or around the mouth), stomach flu (gastroenteritis), small red bumps on your skin, acne, or feeling tired.

The most common side effects of BIMZELX in psoriatic arthritis include upper respiratory tract infections, headache, urinary tract infections, oral thrush or infections in the mouth, and diarrhea.

Please see full **Important Safety Information** on pages 14-15 and the accompanying full **Prescribing Information**, including **Medication Guide**.



# LIVING WITH HIDRADENITIS SUPPURATIVA

**Hidradenitis suppurativa (HS) is a chronic, autoinflammatory skin condition that can cause recurring painful symptoms, like boil-like abscesses and tunnels that can lead to scarring and surgery.**

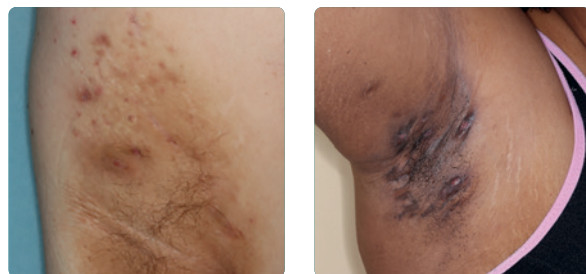


## WHAT CAUSES HS?

HS is thought to be the result of an overactive immune system that produces too many inflammatory proteins inside the body. These inflammatory proteins, like IL-17A and IL-17F, are thought to cause the inflammation that can lead to boil-like abscesses on your skin.

## CAN HS PROGRESS?

HS can progress and worsen over time, with tunnels forming under the skin between abscesses, which can lead to scarring. That's why it's important to understand more about HS, and what's happening in your body.



HS symptoms can progress, leading to scarring.

Clinical trial images before taking BIMZELX. Images have not been retouched.

## THE TOLL OF HS

Hidradenitis suppurativa can affect you in many ways. Beyond the physical pain and discomfort associated with the condition, people who live with HS can also be impacted emotionally.

Uncontrolled symptoms like abscesses can contribute to feelings of anxiety and depression. If you find yourself struggling with your mental health, there is support available. Talk to your doctor about the emotional impact HS might be having on your life so that you can start feeling better.

## IMPORTANT SAFETY INFORMATION

The most common side effects of BIMZELX in non-radiographic axial spondyloarthritis include upper respiratory tract infections, headache, cough, joint pain, tonsillitis, urinary tract infections, oral thrush or infections in the mouth, diarrhea, feeling tired, muscle aches, and an increase in liver enzyme levels.

The most common side effects of BIMZELX in ankylosing spondylitis include upper respiratory tract infections, headache, pain at injection site, vaginal yeast infections, oral thrush or infections in the mouth, diarrhea, and rash.

Please see full **Important Safety Information** on pages 14-15 and the accompanying full **Prescribing Information**, including **Medication Guide**.



## PATIENT SUPPORT AS UNIQUE AS YOU ARE

BIMZELX Navigate® provides personalized resources to support you during your treatment journey.



**BIMZELX  
NAVIGATE BRIDGE**  
FROM YOUR FIRST DOSE,  
YOU MAY PAY

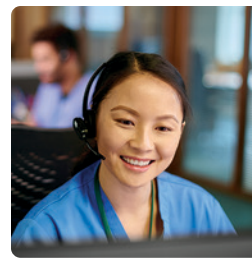
*\$15 per dose\**

**Our simplified approach helps make getting on treatment faster and easier.**

- From the first dose, eligible, commercially insured patients may pay only \$15 per dose for BIMZELX® for up to 2 years or until coverage is approved, whichever comes first, through the BIMZELX Navigate Bridge program.\*
- Once insurance coverage is approved, eligible, commercially insured patients may pay as little as \$5 per dose for BIMZELX.†
- Your Nurse Navigator is committed to you, ready to answer questions about your prescription status, insurance coverage, and your treatment goals.
- Your Nurse Navigator can help you enroll into the BIMZELX Navigate Savings program.

\*For eligible, commercially insured patients only. Eligible patients who have a delay or denial of coverage may pay \$15 per dose of BIMZELX for up to two years or until the patient's commercial insurance plan approves coverage, whichever comes first. Please see full eligibility and terms at [www.bimzelx.com/patient-support/navigate-benefits](http://www.bimzelx.com/patient-support/navigate-benefits).

†Eligible, commercially insured patients with approved coverage may pay as little as \$5 per dose. Please see full eligibility and terms at [www.bimzelx.com/patient-support/navigate-benefits](http://www.bimzelx.com/patient-support/navigate-benefits).



**YOUR SINGLE,  
COMPASSIONATE  
POINT OF**  
*connection*

When you enroll, you'll be paired with a dedicated Nurse Navigator†—one person you can rely on to connect you to everything BIMZELX Navigate has to offer.

Nurse Navigators: 1-833-931-6877, 8am-8pm ET M-F

†Nurse Navigators do not provide medical advice and will refer you to your healthcare professional for any treatment-related questions.



**BIMZELX MYNAVIGATE**  
**ONLINE**  
*resources*

**Stay focused on treatment goals with tools and resources at [NavigateStartsHere.com](http://NavigateStartsHere.com)**

- Schedule calls with your Nurse Navigator
- Find injection resources
- Order a sharps container

**JOINING IS A snap**

- 1 Scan with your phone or visit [NavigateStartsHere.com](http://NavigateStartsHere.com).
- 2 Create your account online.



## IMPORTANT SAFETY INFORMATION

### What is the most important information I should know about BIMZELX® (bimekizumab-bkzx)?

BIMZELX is a medicine that affects your immune system. BIMZELX may increase your risk of having serious side effects, including:

- **Suicidal thoughts and behavior have happened in some people treated with BIMZELX.** Get medical help right away or call the National Suicide and Crisis Lifeline at 988 if you, your caregiver or your family member notice in you any of the following symptoms:
  - new or worsening depression or anxiety
  - thoughts of suicide, dying, or hurting yourself
  - changes in behavior or mood
  - acting on dangerous impulses
  - attempt to commit suicide
- **Infections.** BIMZELX is a medicine that may lower the ability of your immune system to fight infections and may increase your risk of infections, including serious infections.
  - Your healthcare provider should check you for infections and tuberculosis (TB) before starting treatment with BIMZELX.
  - If your healthcare provider feels you are at risk for TB, you may be treated with medicine for TB before you begin treatment with BIMZELX and during your treatment.
  - Your doctor should watch you closely for signs and symptoms of TB during and after treatment with BIMZELX. **Do not take BIMZELX if you have an active TB infection.**

### Before starting BIMZELX, tell your healthcare provider if you:

- are being treated for an infection
- have an infection that does not go away or that keeps coming back
- have TB or have been in close contact with someone with TB
- think you have an infection or have symptoms of an infection such as:
  - fever, sweats, or chills
  - muscle aches
  - cough
  - shortness of breath
  - blood in your phlegm
  - weight loss
  - warm, red, or painful skin or sores on your body different from your psoriasis
  - diarrhea or stomach pain
  - burning when you urinate or urinating more often than normal

**After starting BIMZELX, call your healthcare provider right away if you have any of the signs of infection listed above.** Do not use BIMZELX if you have any signs of infection unless you are instructed to by your healthcare provider. See **“What are the possible side effects of BIMZELX?”** for more information about side effects.

### What is BIMZELX?

BIMZELX is a prescription medicine used to treat:

- adults with moderate-to-severe plaque psoriasis who may benefit from taking injections or pills (systemic therapy) or treatment using ultraviolet light alone or with pills (phototherapy)
- adults with active psoriatic arthritis
- adults with active non-radiographic axial spondyloarthritis with objective signs of inflammation
- adults with active ankylosing spondylitis
- adults with moderate-to-severe hidradenitis suppurativa.

It is not known if BIMZELX is safe and effective in children.

### Before using BIMZELX, tell your healthcare provider about all of your medical conditions, including if you:

- have any of the conditions or symptoms listed in the section **“What is the most important information I should know about BIMZELX?”**

- have a history of depression, or suicidal thoughts or behavior
- have liver problems
- have inflammatory bowel disease (Crohn’s disease or ulcerative colitis)
- have recently received or are scheduled to receive an immunization (vaccine). You should avoid receiving live vaccines during treatment with BIMZELX.
- are pregnant or plan to become pregnant. It is not known if BIMZELX can harm your unborn baby.
  - If you become pregnant while taking BIMZELX, you are encouraged to enroll in the Pregnancy Registry, which is used to collect information about the health of you and your baby. Talk to your healthcare provider or call 1-877-311-8972 to enroll in this registry or visit <http://mothertobaby.org/pregnancy-studies/>.
- are breastfeeding or plan to breastfeed. It is not known if BIMZELX passes into your breast milk. Talk to your healthcare provider about the best way to feed your baby during treatment with BIMZELX.

**Tell your healthcare provider about all the medicines you take,** including prescription and over-the-counter medicines, vitamins, and herbal supplements.

### What are the possible side effects of BIMZELX?

**BIMZELX may cause serious side effects. See “What is the most important information I should know about BIMZELX?”**

- **Elevated liver enzyme levels.** Your healthcare provider will do blood tests to check your liver enzyme levels before starting treatment and during treatment with BIMZELX. Your healthcare provider may temporarily stop or permanently stop your treatment with BIMZELX if you develop liver problems. Call your healthcare provider right away if you develop any signs or symptoms of liver problems, including:
  - pain on the right side of your stomach-area
  - feeling very tired
  - loss of appetite
  - nausea and vomiting
  - itching
  - dark urine
  - light-colored stool
  - yellowing of your skin or the whites of your eyes
- **Inflammatory bowel disease.** New cases of inflammatory bowel disease or “flare-ups” have happened with BIMZELX. If you have inflammatory bowel disease (Crohn’s disease or ulcerative colitis), tell your healthcare provider if you have worsening disease symptoms during treatment with BIMZELX or develop new or worsening signs of Crohn’s disease or ulcerative colitis.

**The most common side effects of BIMZELX in people treated for psoriasis and moderate-to-severe hidradenitis suppurativa include:** upper respiratory tract infections, headache, herpes simplex infections (cold sores in or around the mouth), small red bumps on your skin, feeling tired, fungal infections (oral thrush or infection in the mouth, throat, skin, nails, feet, or genitals), pain, redness or swelling at injection site, stomach flu (gastroenteritis), and acne.

**The most common side effects of BIMZELX in people treated for psoriatic arthritis include:** upper respiratory tract infections, headache, urinary tract infections, oral thrush or infections in the mouth, and diarrhea.

**The most common side effects of BIMZELX in people treated for non-radiographic axial spondyloarthritis include:** upper respiratory tract infections, headache, cough, joint pain, tonsillitis, urinary tract infections, oral thrush or infections in the mouth, diarrhea, feeling tired, muscle aches, and an increase in liver enzyme levels.

**The most common side effects of BIMZELX in people treated for ankylosing spondylitis include:** upper respiratory tract infections, headache, pain at injection site, vaginal yeast infections, oral thrush or infections in the mouth, diarrhea, and rash.

These are not all of the possible side effects of BIMZELX. Call your doctor for medical advice about side effects.

Use BIMZELX exactly as your doctor tells you to use it.

You are encouraged to report negative side effects of prescription drugs to the FDA. Visit [www.fda.gov/medwatch](http://www.fda.gov/medwatch), or call 1-800-FDA-1088.

Please see the accompanying full Prescribing Information, including Medication Guide.



 **Bimzelx**<sup>®</sup>

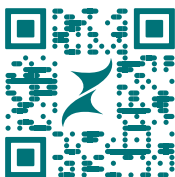
(bimekizumab-bkzx)

*Navigate*

## UNIQUELY PERSONAL TREATMENT SUPPORT

---

PEOPLE TAKING BIMZELX CAN ENROLL TODAY.



- 1 Scan with your phone or visit [NavigateStartsHere.com](https://NavigateStartsHere.com).
- 2 Create your account online and log in as soon as today!

 **Bimzelx**<sup>®</sup>  
(bimekizumab-bkzx)

BIMZELX<sup>®</sup>, BIMZELX Navigate<sup>®</sup>, and UCBCares<sup>®</sup> are registered trademarks of the UCB Group of Companies. All other trademarks and registered trademarks are the property of their respective holders.

 Inspired by **patients**.  
Driven by **science**.

©2024 UCB, Inc., Smyrna, GA 30080. All rights reserved.

US-BK-2400754

Printed in the USA.